



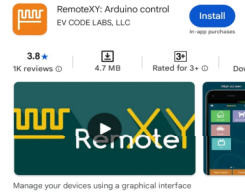
How to Operate with Mobile Phone via Bluetooth

Step 1: Power on the Light

- Ensure the Ascentech Rapid Light unit is connected to Genset.
- Press the main power switch to turn on the unit.

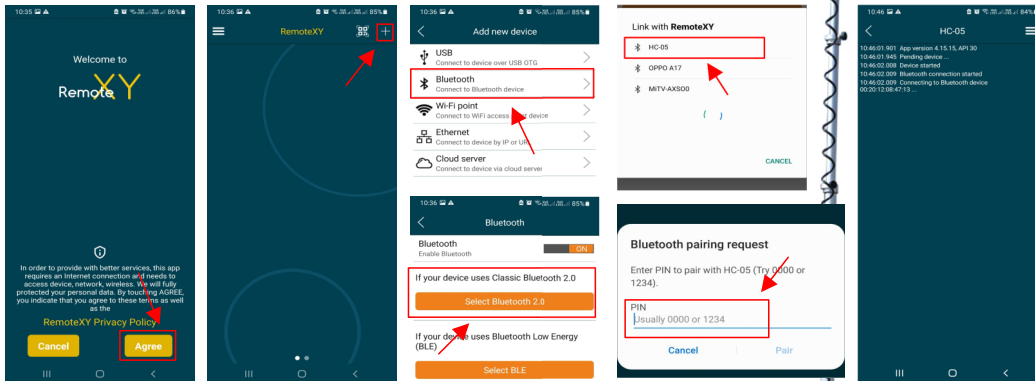
Step 2: Install the Mobile App

- Download the RemoteXY: Arduino control app from the Google Play Store or Apple App Store.
- Install and open the app.



Step 3: Pair with the Light

- Turn on Bluetooth on your phone.
- Open the app and click agree.
- Click (+) icon and select **bluetooth** option and **Select Bluetooth 2.0** option then select **HC-05** option and enter pin for pairing bluetooth.
- Enter pin (usually Pin 0000 or 1234) and then Rapid light successful connected with your Mobile phone app.

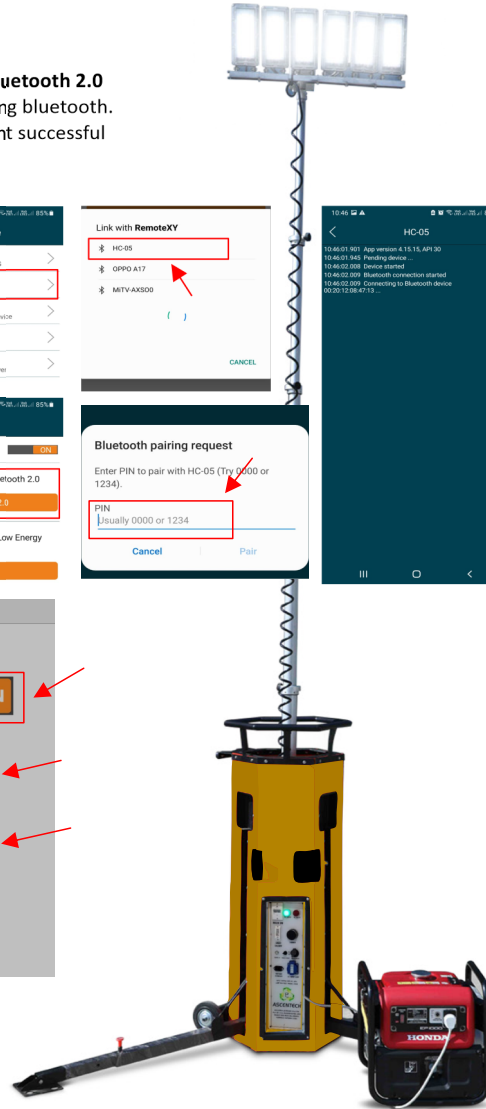
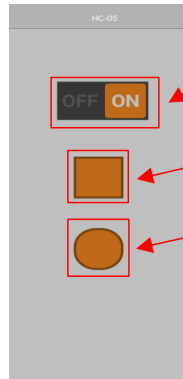


Step 3: Control Features via App

- ON & OFF Button for Light on & off
- Button 2 for Tower UP
- Button 3 for Tower Down

Step 4: Disconnect or Turn Off

- To disconnect, turn off Bluetooth from the app or your mobile.
- Power off the light using the control switch when done.



ASCENTECH®

RAPID Light Tower

ASCENTECH RAPID LED Light

USER MANUAL



Manufactured by :
ASCENTECH LIGHTENING SOLUTION
Plot No. 50/A Jajru Industrial Area, Main
Bypass Road, Ballabgarh, Faridabad,
Haryana - 121004
Mobile No. :- **+91 78384 61601, +91 81303 88587**
Website:- **www.ascentech.in**

OPERATING INSTRUCTIONS



WARNING

Only use the specified battery and corresponding charger.

For specific charging instructions, please refer to the operating manual provided with the charger and battery.



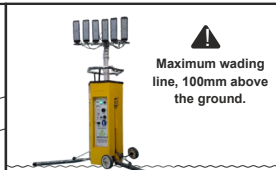
EXPANDING/RETRACTING SUPPORT LEGS

The three support legs can be individually unfolded to maintain device stability. On uneven surfaces, you can adjust the height of each support leg to ensure balance and use a level indicator for confirmation.

1.Expanding Support Legs: Lift the release button upward to unlock, allowing the support legs to automatically slide down and open. Please be cautious to stay clear of the sliding radius to avoid injury.

2.Retracting Support Legs: Pinch the retract button and lift the support leg upward until it locks.

3.Adjusting Device Position: Grasp the upper handle of the device and pull upward, allowing the support legs to automatically slide down and lock into place. Release the retract button to unlock the support legs for further adjustment. Ensure to pull the upper handle during the process of adjusting and retracting the support legs to release the pressure on them.



Notice: All-terrain climbing wheels are designed for quickly traversing complex terrain but are not suitable for continuous stair climbing or situations where the wheels may be scratched easily.

TRANSPORTATION

1.For short-distance transportation, one person can do so safely by tilting the device and placing the center of gravity above the wheels while pushing it forward is the most efficient method.

2.Under all circumstances, lifting the device manually requires at least two people to avoid injury.

3.During transportation, ensure all movable parts, including the support legs and battery compartment, are locked in place.

4.When lifting the device, use all four upper handles simultaneously as anchor points to prevent any risk of slipping. The device should not be suspended for an extended period.

Important Note: Do not store the light in a hoisted position.



ELEVATING ELECTRIC POLE

Ensure the battery is charged or the device is plugged into the mains power supply, then switch on the controller. When the light heads illuminate, it indicates that the device is ready for elevation. Use the push button on the controller to control the upward/downward movement light pole. Release the push button to fix the light pole in its current position..

Important Notes:

1.Before raising or retracting the light pole, ensure there are no obstacles along its path to prevent damage. If obstacles are encountered, the elevation process will automatically stop. After clearing the obstacles, you can continue the elevation operation.

2.When using the controller, do not stay too close to the device. Pay attention to the status of the light pole and avoid staring directly at the illuminated light heads.

ADJUSTING THE LIGHT HEADS

1.Start the elevation pole and raise it until the light heads are fully exposed above the upper grip before adjusting their positions.

2.The light heads can rotate 360 degrees axially and flip 180 degrees vertically.

Adjacent light heads sharing an axis (requires loosening disc-shaped bolts for adjustment) can rotate 180 degrees.

Important Note:

When fully retracting the light pole, pay attention to adjusting the positions of the light heads to ensure they can fully retract to the original position.



Lower Height



All light at one direction



Easy to move



Light Weight

BATTERY USAGE INSTRUCTIONS

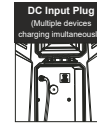
Only original manufacturer-recommended accessories should be used. Using other accessories poses potential risks and may void the warranty terms.

Inserting/Removing Battery Pack:

- 1.Align the battery with the slot and listen for a click to indicate that the battery is locked in place.
- 2.Simultaneously press the release button on the battery and use your other hand to pull out the battery pack.

Important Note:

Ensure the battery compartment is clean and free from moisture or debris. After inserting/removing the battery, securely fasten the latch.

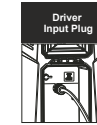


Charging the Battery Inside the Device

- 1.The DC output cable on the charger can be used to charge the battery inside the device through the DC port located inside the storage compartment.
- 2.The light tower can operate normally while charging.

Adjusting Lighting with Battery Power

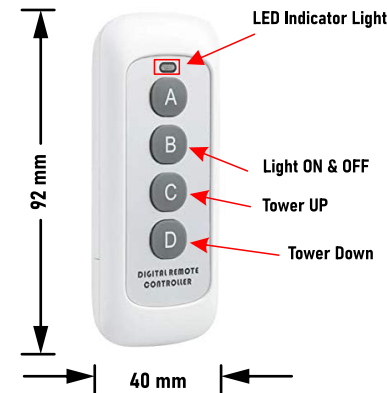
- 1.Turn on the MCB. Used Dimmer to control light intensity.



Adjusting Lighting with Mains Power

- 1.Insert the output end of the driver into the AC input port inside the storage compartment and power it on; the indicator light will illuminate.
- 2.After securely fixing the driver in place, use the knob on the driver power supply to adjust the brightness of the lights.

Remote Functions :-



SPECIFICATIONS

Height	4 Mtr.
Weight	50Kg/ 52Kg
Power Supply	Battery/ AC 100-277V
Output(USB)	Type-A &Type-C (5V 2A)
IP Grade	Ip66
Run Times	3.5 hrs.
Battery type	Lithim -ion

