



ASCENTECH®

PRODUCT CATALOGUE



ASCENTECH

ABOUT US

Ascentech, a DAC certified ISO 9001 & 14001 organization, has been a leading name in LED lighting from 2014. Ascentech is recognized as an R&D house. Ascentech has state-of-the-art testing equipments and conceives, designs and makes LED based products, including all electronics like led PCB's, LED drivers and fixtures. After final assembly, extensive in-house testing is done before supplying products to the market. We, at Ascentech, believe that it is critical for our products to have better illumination ability and energy efficiency and be also 100% fault-free. Therefore, to deliver the best quality products, we have followed a quality management process that adheres to international standards. We are backed by a pool of quality personnel who regularly check the production process to ensure that we leave no loopholes for any kind of fault to occur.

Ascentech vast product range is well accepted by various government, semi-government organizations/institutions and private companies and has received satisfactory performance test certificates from them. Research & Development Ascentech has developed the technology behind LED-lighting systems after investing many man-years in R&D, mastering the technology - electronics and optics. We have an R&D lab having a dedicated facility and team working on new and innovative products for energy conservation. To meet the latest market demands, we are backed by a well equipped manufacturing unit with latest equipment and machines. Based on advanced and sophisticated technology, the different machines installed at our unit are capable of achieving our target production with full accuracy and quality.

INDEX



COB LIGHTS

.....

02 - 09



LED PANEL LIGHTS

.....

11 - 21



LED BULBS

.....

23 - 29



LED OUTDOOR LIGHTS

.....

31 - 43



BOLLARD LIGHTS

.....

45 - 45



POST TOP LIGHTS

.....

47 - 48



EMERGENCY LIGHTS

.....

50 - 57



TORCH LIGHTS

.....

59 - 64

COB LIGHTS





COB SWIVEL DOWN LIGHTS



FGDL-05

WATTAGE : 9W
HEIGHT : 45 mm
DIA : 100 mm
COLOUR : 6500K
CUT OUT DIA : 80 mm



FGDL-07

WATTAGE : 15W
HEIGHT : 55 mm
DIA : 115 mm
COLOUR : 6500K
CUT OUT DIA : 95 mm



FGDL-09

WATTAGE : 20W
HEIGHT : 75 mm
DIA : 140 mm
COLOUR : 6500K
CUT OUT DIA : 120 mm



FGDL-10

WATTAGE : 24W
HEIGHT : 75 mm
DIA : 140 mm
COLOUR : 6500K
CUT OUT DIA : 120 mm



FGDL-11

WATTAGE : 30W
HEIGHT : 75 mm
DIA : 160 mm
COLOUR : 6500K
CUT OUT DIA : 140 mm



FGDL-13

WATTAGE : 40W
HEIGHT : 75 mm
DIA : 160 mm
COLOUR : 6500K
CUT OUT DIA : 140 mm



CRI >80



>30,000 Hrs.



COB SPOT DOWN LIGHTS

FGDL-15



WATTAGE : 9W
HEIGHT : 65 mm
DIA : 75 mm
COLOUR : 6500K
CUT OUT DIA : 65 mm

FGDL-17



WATTAGE : 15W
HEIGHT : 80 mm
DIA : 85 mm
COLOUR : 6500K
CUT OUT DIA : 75 mm

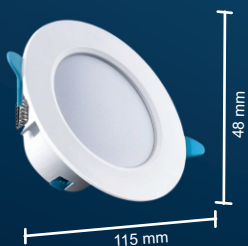
FGDL-19



WATTAGE : 20W
HEIGHT : 90 mm
DIA : 95 mm
COLOUR : 6500K
CUT OUT DIA : 85 mm

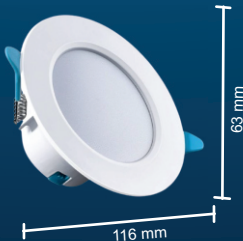
CONCEALED LIGHT

FGDL-01



WATTAGE : 05W
HEIGHT : 48 mm
DIA : 115 mm
COLOUR : Cool White
CUTOUT DIA : 75 mm
BODY : Aluminium with PC

FGDL-03



WATTAGE : 07W
HEIGHT : 63 mm
DIA : 116 mm
COLOUR : Cool White
CUTOUT DIA : 88 mm
BODY : Aluminium with PC



CRI >80



>30,000 Hrs.



COB TRACK LIGHTS



FGTK-01

WATTAGE : 5W
CCT : 6000K
BODY : Aluminium



FGTK-02

WATTAGE : 10W
CCT : 6000K
BODY : Aluminium



FGTK-03

WATTAGE : 20W
CCT : 6000K
BODY : Aluminium



FGTK-04

WATTAGE : 30W
CCT : 6000K
BODY : Aluminium



CRI >80



>30,000 Hrs.



ADJUSTABLE LED SURFACE COB LIGHT



FGTK-06

WATTAGE : 10W
CCT : 6000K
BODY : Aluminium



FGTK-07

WATTAGE : 20W
CCT : 6000K
BODY : Aluminium

COB SURFACE CYLINDER



FGDL-20

WATTAGE : 7W
HEIGHT : 70 mm
DIA : 55 mm
COLOUR : 6500K



FGDL-21

WATTAGE : 12W
HEIGHT : 90 mm
DIA : 70 mm
COLOUR : 6500K



FGDL-22

WATTAGE : 18W
HEIGHT : 100 mm
DIA : 85 mm
COLOUR : 6500K



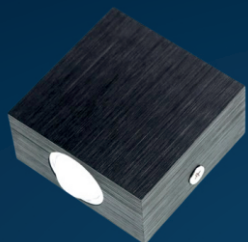
CRI >80



>30,000 Hrs.

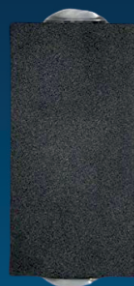


WALL LIGHT



FGWL-01

WATTAGE : 3W
LxBxH : 50x40x35 mm
CCT : 3000K
SHAPE : Rectangular
TYPE : 1 Way



FGWL-02

WATTAGE : 6W
LxBxH : 50x40x35 mm
CCT : 3000K
SHAPE : Rectangular
TYPE : 2 Way



FGWL-03

WATTAGE : 7W
LxBxH : 50x90x35 mm
CCT : 3000K
SHAPE : Rectangular
TYPE : 2 Way



FGWL-04

WATTAGE : 6W
LxBxH : 75x75x35 mm
CCT : 3000K
SHAPE : Square
TYPE : 2 Way



FGWL-05

WATTAGE : 7W
LxBxH : 70x70x50 mm
CCT : 3000K
SHAPE : Square
TYPE : 2 Way



FGWL-06

WATTAGE : 12W
LxBxH : 70x70x50 mm
CCT : 3000K
SHAPE : Square
TYPE : 4 Way



CRI >80



>20,000 Hrs.



FGWL- 07

WATTAGE : 12W
LxBxH : 75x110x40 mm
CCT : 3000K
SHAPE : Rectangular
TYPE : 2 Way



FGWL-08

WATTAGE : 18W
LxBxH : 160x80x45 mm
CCT : 3000K
SHAPE : Rectangular
TYPE : 2 Way

WALL CYLINDER UP-DOWN SPOT LIGHT



FGDL-23

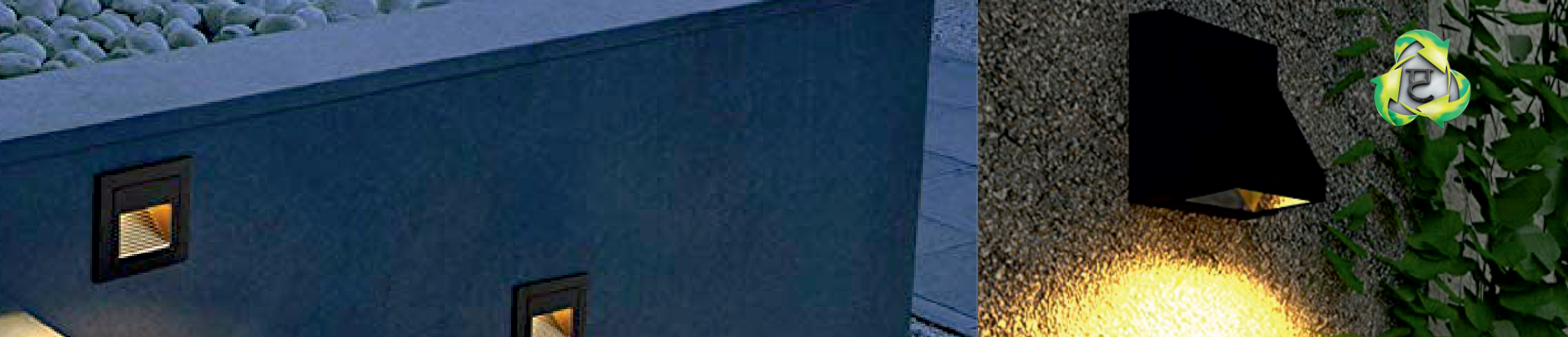
WATTAGE : 12W
HEIGHT : 125 mm
DIA : 80 mm
COLOUR : 6500K



CRI >80



>20,000 Hrs.



LED FOOT LIGHT

FGFT-01



WATTAGE : 3W
LxBxH : 100x100x60 mm
COLOUR : 3000K
BODY : Aluminum
CUT OUT SIZE : 90x90 mm

FGFT-02



WATTAGE : 6W
LxBxH : 100x100x60 mm
COLOUR : 3000K
BODY : Aluminum
CUT OUT SIZE : 90x90 mm

FGFT-03



WATTAGE : 12W
LxBxH : 100x100x60 mm
COLOUR : 3000K
BODY : Aluminum
CUT OUT SIZE : 90x90 mm



CRI >80



>20,000 Hrs.



BULK HEAD LIGHT



FGBK-02

WATTAGE : 5W
LxBxH : 167x78x61 mm
CCT : 6000K
DIFFUSER : Polycarbonate



FGBK-02

WATTAGE : 10W
LxBxH : 167x78x61 mm
CCT : 6000K
DIFFUSER : Polycarbonate



FGBK-03

WATTAGE : 12W
LxBxH : 167x78x61 mm
CCT : 6000K
DIFFUSER : Polycarbonate



FGBK-03

WATTAGE : 15W
LxBxH : 167x78x61 mm
COLOUR : 6000K
DIFFUSER : Polycarbonate



FGBK-04

WATTAGE : 18W
LxBxH : 167x78x61 mm
COLOUR : 6000K
DIFFUSER : Polycarbonate



FGBK-04

WATTAGE : 20W
LxBxH : 167x78x61 mm
COLOUR : 6000K
DIFFUSER : Polycarbonate



CRI >80



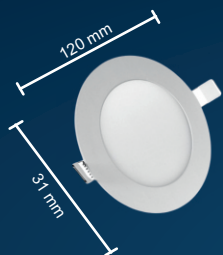
>20,000 Hrs.

LED PANEL LIGHTS





LED ULTRA SLIM ROUND PANEL

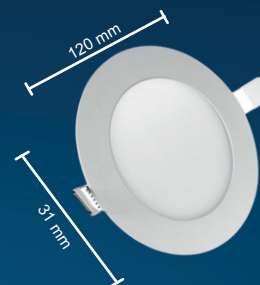


FGPL-02

WATTAGE	: 6W	6W
HEIGHT	: 31 mm	31 mm
DIA	: 120 mm	120 mm
COLOUR	: Cool White	Warm White
CUT OUT DIA	: 100 mm	100 mm
BODY	: PC	PC

FGPL-15

WATTAGE	: 6W	6W
HEIGHT	: 31 mm	31 mm
DIA	: 120 mm	120 mm
COLOUR	: Cool White	Warm White
CUT OUT DIA	: 100 mm	100 mm
BODY	: PC	PC

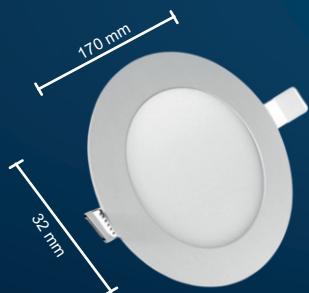


FGPL-03

WATTAGE	: 9W	9W
HEIGHT	: 31 mm	31 mm
DIA	: 120 mm	120 mm
COLOUR	: Cool White	Warm White
CUT OUT DIA	: 100 mm	100 mm
BODY	: PC	PC

FGPL-16

WATTAGE	: 9W	9W
HEIGHT	: 31 mm	31 mm
DIA	: 120 mm	120 mm
COLOUR	: Cool White	Warm White
CUT OUT DIA	: 100 mm	100 mm
BODY	: PC	PC

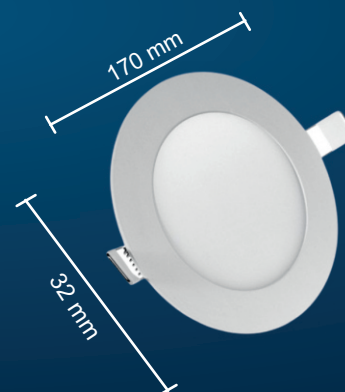


FGPL-04

WATTAGE	: 12W	12W
HEIGHT	: 32 mm	32 mm
DIA	: 170 mm	170 mm
COLOUR	: Cool White	Warm White
CUT OUT DIA	: 150 mm	150 mm
BODY	: PC	PC

FGPL-17

WATTAGE	: 12W	12W
HEIGHT	: 32 mm	32 mm
DIA	: 170 mm	170 mm
COLOUR	: Cool White	Warm White
CUT OUT DIA	: 150 mm	150 mm
BODY	: PC	PC



FGPL-05

WATTAGE	: 15W	15W
HEIGHT	: 32 mm	32 mm
DIA	: 170 mm	170 mm
COLOUR	: Cool White	Warm White
CUT OUT DIA	: 150 mm	150 mm
BODY	: PC	PC

FGPL-18

WATTAGE	: 15W	15W
HEIGHT	: 32 mm	32 mm
DIA	: 170 mm	170 mm
COLOUR	: Cool White	Warm White
CUT OUT DIA	: 150 mm	150 mm
BODY	: PC	PC



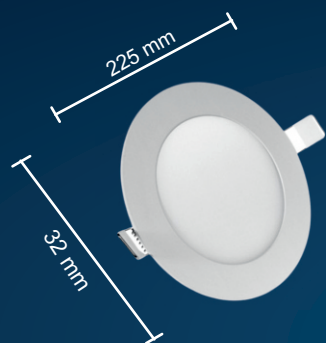
CRI >80



>40,000 Hrs.



LED ULTRA SLIM ROUND PANEL

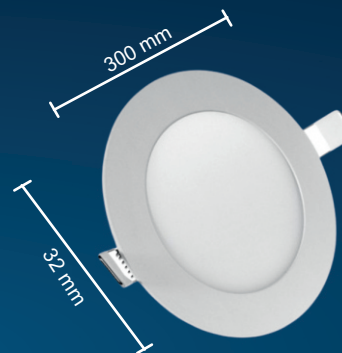


FGPL-07

WATTAGE : 20W
HEIGHT : 32 mm
DIA : 225 mm
COLOUR : Cool White
CUT OUT DIA : 200 mm
BODY : PC

FGPL-20

20W
32 mm
225 mm
Warm White
200 mm
PC



FGPL-08

WATTAGE : 24W
HEIGHT : 32 mm
DIA : 300 mm
COLOUR : Cool White
CUT OUT DIA : 275 mm
BODY : PC

FGPL-21

24W
32 mm
300 mm
Warm White
275 mm
PC



CRI >80



>40,000 Hrs.



LED ULTRA SLIM SQUARE PANEL

FGPL-28

WATTAGE	: 6W	6W
LxBxH	: 85x85x21 mm	85x85x21 mm
COLOUR	: Cool White	Warm White
CUT OUT DIA	: 77 mm	77 mm
BODY	: PC	PC

FGPL-47

WATTAGE	: 6W	6W
LxBxH	: 85x85x21 mm	85x85x21 mm
COLOUR	: Cool White	Warm White
CUT OUT DIA	: 77 mm	77 mm
BODY	: PC	PC

FGPL-29

WATTAGE	: 9W	9W
LxBxH	: 120x120x21 mm	120x120x21 mm
COLOUR	: Cool White	Warm White
CUT OUT DIA	: 102 mm	102 mm
BODY	: PC	PC

FGPL-48

WATTAGE	: 9W	9W
LxBxH	: 120x120x21 mm	120x120x21 mm
COLOUR	: Cool White	Warm White
CUT OUT DIA	: 102 mm	102 mm
BODY	: PC	PC

FGPL-30

WATTAGE	: 12W	12W
LxBxH	: 144x144x22 mm	144x144x22 mm
COLOUR	: Cool White	Warm White
CUT OUT DIA	: 127 mm	127 mm
BODY	: PC	PC

FGPL-49

WATTAGE	: 12W	12W
LxBxH	: 144x144x22 mm	144x144x22 mm
COLOUR	: Cool White	Warm White
CUT OUT DIA	: 127 mm	127 mm
BODY	: PC	PC

FGPL-31

WATTAGE	: 15W	15W
LxBxH	: 169x169x22 mm	169x169x22 mm
COLOUR	: Cool White	Warm White
CUT OUT DIA	: 153 mm	153 mm
BODY	: PC	PC

FGPL-50

WATTAGE	: 15W	15W
LxBxH	: 169x169x22 mm	169x169x22 mm
COLOUR	: Cool White	Warm White
CUT OUT DIA	: 153 mm	153 mm
BODY	: PC	PC

FGPL-32

WATTAGE	: 18W	18W
LxBxH	: 190x190x22 mm	190x190x22 mm
COLOUR	: Cool White	Warm White
CUT OUT DIA	: 178 mm	178 mm
BODY	: PC	PC

FGPL-51

WATTAGE	: 18W	18W
LxBxH	: 190x190x22 mm	190x190x22 mm
COLOUR	: Cool White	Warm White
CUT OUT DIA	: 178 mm	178 mm
BODY	: PC	PC



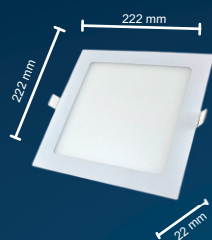
CRI >80



>40,000 Hrs.



LED ULTRA SLIM SQUARE PANEL

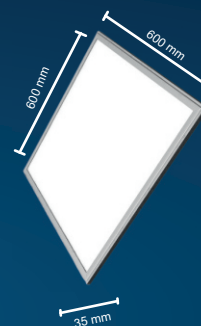


FGPL-34

WATTAGE	: 24W	24W
LxBxH	: 222x222x22 mm	222x222x22 mm
COLOUR	: Cool White	Warm White
CUT OUT DIA	: 203 mm	203 mm
BODY	: PC	PC

FGPL-53

WATTAGE	: 24W	24W
LxBxH	: 222x222x22 mm	222x222x22 mm
COLOUR	: Cool White	Warm White
CUT OUT DIA	: 203 mm	203 mm
BODY	: PC	PC

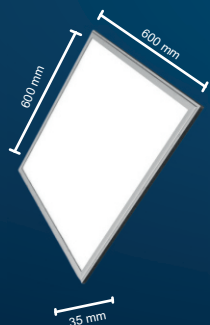


FGPL-35

WATTAGE	: 36W	36W
LxBxH	: 600x600x35 mm	600x600x35 mm
COLOUR	: Cool White	Warm White
CUT OUT DIA	: 585 mm	585 mm
BODY	: PC	PC

FGPL-54

WATTAGE	: 36W	36W
LxBxH	: 600x600x35 mm	600x600x35 mm
COLOUR	: Cool White	Warm White
CUT OUT DIA	: 585 mm	585 mm
BODY	: PC	PC



FGPL-36

WATTAGE	: 40W	40W
LxBxH	: 600x600x35 mm	600x600x35 mm
COLOUR	: Cool White	Warm White
CUT OUT DIA	: 585 mm	585 mm
BODY	: PC	PC

FGPL-55

WATTAGE	: 40W	40W
LxBxH	: 600x600x35 mm	600x600x35 mm
COLOUR	: Cool White	Warm White
CUT OUT DIA	: 585 mm	585 mm
BODY	: PC	PC



FGPL-37

WATTAGE	: 48W	48W
LxBxH	: 600x600x35 mm	600x600x35 mm
COLOUR	: Cool White	Warm White
CUT OUT DIA	: 585 mm	585 mm
BODY	: PC	PC

FGPL-56

WATTAGE	: 48W	48W
LxBxH	: 600x600x35 mm	600x600x35 mm
COLOUR	: Cool White	Warm White
CUT OUT DIA	: 585 mm	585 mm
BODY	: PC	PC



CRI >80



>40,000 Hrs.



LED ULTRA SURFACE SQUARE PANEL



FGPL-38

WATTAGE	: 12W	12W
LxBxH	: 172x172x35 mm	172x172x35 mm
COLOUR	: Cool White	Warm White
BODY	: PC	PC

FGPL-49



FGPL-39

WATTAGE	: 15W	15W
HEIGHT	: 172x172x35 mm	172x172x35 mm
COLOUR	: Cool White	Warm White
BODY	: PC	PC

FGPL-50



FGPL-40

WATTAGE	: 18W	18W
HEIGHT	: 224x224x35 mm	224x224x35 mm
COLOUR	: Cool White	Warm White
BODY	: PC	PC

FGPL-51



FGPL-41

WATTAGE	: 20W	20W
HEIGHT	: 224x224x35 mm	224x224x35 mm
COLOUR	: Cool White	Warm White
BODY	: PC	PC

FGPL-52



CRI >80



>40,000 Hrs.



LED ULTRA SURFACE SQUARE PANEL



FGPL-42

WATTAGE : 24W
LxBxH : 224x224x35 mm
COLOUR : Cool White
BODY : PC

FGPL-53

24W
224x224x35 mm
Warm White
PC



FGPL-43

WATTAGE : 36W
HEIGHT : 600x600x35 mm
COLOUR : Cool White
BODY : PC

FGPL-54

36W
600x600x35 mm
Warm White
PC



FGPL-44

WATTAGE : 40W
HEIGHT : 600x600x35 mm
COLOUR : Cool White
BODY : PC

FGPL-55

40W
600x600x35 mm
Warm White
PC



FGPL-45

WATTAGE : 48W
HEIGHT : 600x600x35 mm
COLOUR : Cool White
BODY : PC

FGPL-56

48W
600x600x35 mm
Warm White
PC



CRI >80



>40,000 Hrs.



LED ULTRA SURFACE ROUND PANEL



FGPL-09

WATTAGE	: 12W	12W
HEIGHT	: 35 mm	35 mm
DIA	: 177 mm	177 mm
COLOUR	: Cool White	Warm White
BODY	: PC	PC

FGPL-22



FGPL-10

WATTAGE	: 15W	15W
HEIGHT	: 35 mm	35 mm
DIA	: 225 mm	225 mm
COLOUR	: Cool White	Warm White
BODY	: PC	PC

FGPL-23



FGPL-11

WATTAGE	: 18W	18W
HEIGHT	: 35 mm	35 mm
DIA	: 225 mm	225 mm
COLOUR	: Cool White	Warm White
BODY	: PC	PC

FGPL-24



FGPL-13

WATTAGE	: 24W	24W
HEIGHT	: 35 mm	35 mm
DIA	: 300 mm	300 mm
COLOUR	: Cool White	Warm White
BODY	: PC	PC

FGPL-26



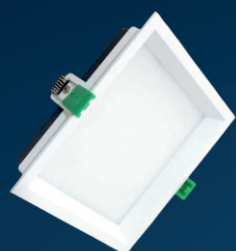
CRI >80



>40,000 Hrs.

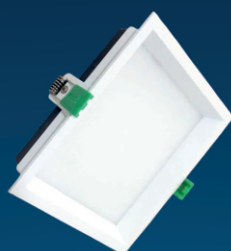


LED DEEP ANTI GLARE SQUARE PANEL LIGHT



FGPL-71

WATTAGE : 12W
LxBxH : 115x105x105 mm
COLOUR : 6500K
BODY : Aluminium



FGPL-73

WATTAGE : 18W
LxBxH : 150x135x135 mm
COLOUR : 6500K
BODY : Aluminium



FGPL-75

WATTAGE : 24W
LxBxH : 170x160x160 mm
COLOUR : 6500K
BODY : Aluminium

LED DEEP ANTI GLARE ROUND PANEL LIGHT



FGPL-70

WATTAGE : 12W
HEIGHT : 50 mm
DIA : 120 mm
COLOUR : 6500K
CUT OUT DIA : 115 mm
BODY : Aluminium



FGPL-72

WATTAGE : 18W
HEIGHT : 50 mm
DIA : 155 mm
COLOUR : 6500K
CUT OUT DIA : 150 mm
BODY : Aluminium



FGPL-74

WATTAGE : 24W
HEIGHT : 50 mm
DIA : 175 mm
COLOUR : 6500K
CUT OUT DIA : 170 mm
BODY : Aluminium



CRI >80



>40,000 Hrs.



LED ULTRA SLIM ROUND PANEL LIGHT

FGPL-76



WATTAGE : 4W
HEIGHT : 16 mm
DIA : 80 mm
COLOUR : 6500K
BODY : Aluminum
CUT OUT DIA : 70 mm

FGPL-77



WATTAGE : 15W
HEIGHT : 16 mm
DIA : 165 mm
COLOUR : 6500K
BODY : Aluminum
CUT OUT DIA : 155 mm

FGPL-78



WATTAGE : 22W
HEIGHT : 16 mm
DIA : 215 mm
COLOUR : 6500K
BODY : Aluminum
CUT OUT DIA : 200 mm

LED ULTRA SLIM SQUARE PANEL LIGHT

FGPL-81



WATTAGE : 4W
LxBxH : 84x84x15 mm
COLOUR : 6500K
BODY : Aluminum
CUT OUT SIZE : 70x70 mm

FGPL-82



WATTAGE : 15W
LxBxH : 162x162x15 mm
COLOUR : 6500K
BODY : Aluminum
CUT OUT SIZE : 150x150 mm

FGPL-83



WATTAGE : 22W
LxBxH : 215x215x15 mm
COLOUR : 6500K
BODY : Aluminum
CUT OUT SIZE : 200x200 mm



CRI >80



>40,000 Hrs.



LED ULTRA SURFACE ROUND PANEL LIGHT



FGPL-79

WATTAGE : 15W
HEIGHT : 32 mm
DIA : 168 mm
COLOUR : 6500K
BODY : Aluminum



FGPL-80

WATTAGE : 18W
HEIGHT : 32 mm
DIA : 215 mm
COLOUR : 6500K
BODY : Aluminum

LED ULTRA SURFACE SQUARE PANEL LIGHT



FGPL-84

WATTAGE : 12W
LxBxH : 115x115x32 mm
COLOUR : 6500K
BODY : Aluminum



FGPL-85

WATTAGE : 18W
LxBxH : 165x165x32 mm
COLOUR : 6500K
BODY : Aluminum



FGPL-86

WATTAGE : 24W
LxBxH : 215x215x32 mm
COLOUR : 6500K
BODY : Aluminum



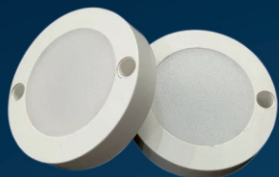
CRI >80



>40,000 Hrs.



LED STRIKER SLIM SURFACE LIGHT



FGPL-68

WATTAGE	: 5W
HEIGHT	: 15 mm
DIA	: 68 mm
COLOUR	: 6000K
BODY	: Polycarbonate

FULL GLOW SURFACE STRIKER LIGHT



FGPL-69

WATTAGE	: 5W
HEIGHT	: 18 mm
DIA	: 65 mm
COLOUR	: 6000K
BODY	: Polycarbonate



CRI >80



>40,000 Hrs.

LED BULBS





LED BULBS

RMLB-03

RMLB-05

WATTAGE	: 7W	7W
HEIGHT	: 110 mm	110 mm
LxB	: 57 mm	57 mm
CAP TYPE	: B22	B22
CCT	: 6000K	3000K



RMLB-03

RMLB-05

WATTAGE	: 9W	9W
HEIGHT	: 110 mm	110 mm
LxB	: 57 mm	57 mm
CAP TYPE	: B22	B22
CCT	: 6000K	3000K



RMLB-01

RMLB-11

WATTAGE	: 12W	12W
HEIGHT	: 120 mm	120 mm
LxB	: 65 mm	65 mm
CAP TYPE	: B22	B22
CCT	: 6000K	3000K



RMLB-01

RMLB-11

WATTAGE	: 15W	15W
HEIGHT	: 120 mm	120 mm
LxB	: 65 mm	65 mm
CAP TYPE	: B22	B22
CCT	: 6000K	3000K



RMLB-04

WATTAGE	: 20W
HEIGHT	: 133 mm
LxB	: 77 mm
CAP TYPE	: B22
CCT	: 6000K



RMLB-06

RMLB-06

RMLB-06

WATTAGE	: 22W	24W	25W
HEIGHT	: 150 mm	150 mm	150 mm
LxB	: 80 mm	80 mm	80 mm
CAP TYPE	: B22	B22	B22
CCT	: 6000K	6000K	6000K



CRI >80



>45,000 Hrs.



RMLB-19

WATTAGE : 30W
LxBxH : 103x103x192 mm
CCT : 6000K
CAP TYPE : B22



RMLB-20

WATTAGE : 40W
LxBxH : 117x117x215 mm
CCT : 6000K
CAP TYPE : B22



RMLB-20

WATTAGE : 50W
LxBxH : 117x117x215 mm
CCT : 6000K
CAP TYPE : B22



RMLB-16

WATTAGE : 10W
LxBxH : 106x200x30 mm
CCT : 6000K
CAP TYPE : B22



RMLB-17

WATTAGE : 15W
LxBxH : 106x230x30 mm
CCT : 6000K
CAP TYPE : B22



RMLB-18

WATTAGE : 20W
LxBxH : 106x280x30 mm
CCT : 6000K
CAP TYPE : B22



CRI >80



>45,000 Hrs.



LED INVERTER BULBS



RMLB-14

WATTAGE : 9W
HEIGHT : 110 mm
DIA : 57 mm
CCT : 6000K
CAP TYPE : B22
BACKUP : 4 Hrs.

RMLB-02

9W
110 mm
57 mm
3000K
B22
4 Hrs.



RMLB-14

WATTAGE : 12W
HEIGHT : 110 mm
DIA : 57 mm
CCT : 6000K
CAP TYPE : B22
BACKUP : 4 Hrs.

RMLB-02

12W
110 mm
57 mm
3000K
B22
4 Hrs.



CRI >80



>45,000 Hrs.



NIGHT LAMPS



FGNL-01

WATTAGE	: 0.5W
HEIGHT	: 68 mm
DIA	: 48 mm
BODY	: Polycarbonate



FGNL-02

WATTAGE	: 0.5W
HEIGHT	: 68 mm
DIA	: 48 mm
BODY	: Polycarbonate



FGNL-03

WATTAGE	: 0.5W
HEIGHT	: 68 mm
DIA	: 48 mm
BODY	: Polycarbonate



FGNL-04

WATTAGE	: 0.5W
HEIGHT	: 68 mm
DIA	: 48 mm
BODY	: Polycarbonate



FGNL-05

WATTAGE	: 0.5W
HEIGHT	: 68 mm
DIA	: 48 mm
BODY	: Polycarbonate



FGNL-06

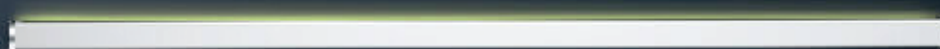
WATTAGE	: 0.5W
HEIGHT	: 68 mm
DIA	: 48 mm
BODY	: Polycarbonate



CRI >80



>35,000 Hrs.



TUBE LIGHTS

FGTL-21



WATTAGE	: 5W
LxBxH	: 305x20x40 mm
BODY	: ABS
MODEL	: T5
CCT	: 6500K

FGTL-05



WATTAGE	: 10W
LxBxH	: 610x20x40 mm
BODY	: ABS
MODEL	: T5
CCT	: 6500K

FGTL-06



WATTAGE	: 12W	12W
LxBxH	: 610x20x40 mm	1200x120 mm
BODY	: ABS	ABS
MODEL	: T5	T8
CCT	: 6500K	6500K

FGTL-12

FGTL-02



WATTAGE	: 18W	18W
LxBxH	: 1130x20x40 mm	1200x120 mm
BODY	: ABS	ABS
MODEL	: T5	T8
CCT	: 6500K	6500K

FGTL-08



FGTL-01

FGTL-09

WATTAGE	: 20W	20W
LxBxH	: 1170x20x40 mm	1200x120 mm
BODY	: ABS	ABS
MODEL	: T5	T8
CCT	: 6500K	6500K

FGTL-15



WATTAGE	: 22W	22W
LxBxH	: 1170x20x40 mm	1200x120 mm
BODY	: ABS	ABS
MODEL	: T5	T8
CCT	: 6500K	6500K

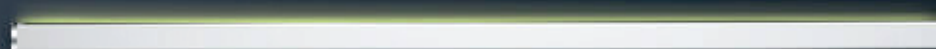
FGTL-16



CRI >80



>25,000 Hrs.



FGTL-20



WATTAGE	: 24W	36W
LxBxH	: 1170x20x40 mm	1170x20x40 mm
BODY	: ABS	ABS
MODEL	: T5	T5
CCT	: 6500K	6500K

FGTL-19



FGTL-19

WATTAGE	: 40W	72W
LxBxH	: 1170x20x40 mm	1170x20x40 mm
BODY	: ABS	ABS
MODEL	: T5	T5
CCT	: 6500K	6500K

FGTL-18

INVERTER TUBE LIGHT

FGTL-13



WATTAGE	: 20W
LxBxH	: 1170x20x40 mm
BODY	: ABS
MODEL	: T5
CCT	: 6500K
BACKUP	: 3 Hrs.

FGTL-22



WATTAGE	: 10W
LxBxH	: 590x20x40 mm
BODY	: ABS
MODEL	: T5
CCT	: 6500K
BACKUP	: 3 Hrs.



CRI >80



>25,000 Hrs.



LED ROPE LIGHT



FGRL-01

LED	: 2835	2835
WATTAGE	: 6W/Mtr.	6W/Mtr.
LENGTH	: 50 Mtr.	50 Mtr.
MODEL	: Pipe Type	Pipe Type

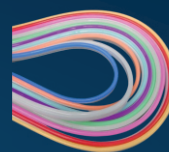
FGRL-02



FGRL-03

LED	: 5050	5050
WATTAGE	: 6W/Mtr.	6W/Mtr.
LENGTH	: 50 Mtr.	50 Mtr.
MODEL	: Pipe Type	Pipe Type

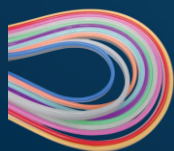
FGRL-04



FGRL-05

LED	: 2825	2835
WATTAGE	: 8W/Mtr.	8W/Mtr.
LENGTH	: 50 Mtr.	50 Mtr.
MODEL	: Neon Strip	Neon Strip

FGRL-06



FGRL-07

LED	: 5050	5050
WATTAGE	: 8W/Mtr.	8W/Mtr.
LENGTH	: 50 Mtr.	50 Mtr.
MODEL	: Neon Strip	Neon Strip

FGRL-08



FGRL-09

LED	: 2835	2835
WATTAGE	: 5W/Mtr.	5W/Mtr.
LENGTH	: 5 Mtr.	5 Mtr.
MODEL	: Strip Type	Strip Type

FGRL-10



FGRL-11

LED	: 5050	5050
WATTAGE	: 5W/Mtr.	5W/Mtr.
LENGTH	: 5 Mtr.	5 Mtr.
MODEL	: Strip Type	Strip Type

FGRL-12



CRI >80



>25,000 Hrs.



COLOUR TEMP.
Red, Green, Blue, Yellow, Orange

LED OUTDOOR LIGHTS





GM MODEL FLOOD LIGHT



FGFL-106

WATTAGE	: 30W	50W	60W
LxBxH	: 175x175x40 mm	220x230x50 mm	220x230x50 mm
CCT	: 6000K	6000K	6000K
Lumen/W	: 100lm/w	100lm/w	100lm/w
Input Voltage	: 90-300V	90-300V	90-300V
PF	: 0.95	0.95	0.95

FGFL-91

FGFL-91



FGFL-90

FGFL-90

WATTAGE	: 100W	120W
LxBxH	: 220x230x45 mm	220x230x45 mm
CCT	: 6000K	6000K
Lumen/W	: 100lm/w	100lm/w
Input Voltage	: 90-300V	90-300V
PF	: 0.95	0.95



FGFL-98

FGFL-97

WATTAGE	: 200W	240W
LxBxH	: 335x315x60 mm	335x315x60 mm
CCT	: 6000K	6000K
Lumen/W	: 100lm/w	100lm/w
Input Voltage	: 90-300V	90-300V
PF	: 0.95	0.95



CRI >80



>50,000 Hrs.



GM MODEL FLOOD LIGHT



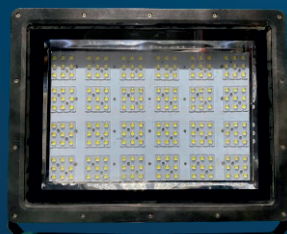
FGFL-94

WATTAGE	: 300W	350W	400W	500W
LxBxH	: 380x370x60 mm	380x370x60 mm	380x370x60 mm	460x495x60 mm
CCT	: 6000K	6000K	6000K	6000K
Lumen/W	: 100lm/w	100lm/w	100lm/w	100lm/w
Input Voltage	: 90-300V	90-300V	90-300V	90-300V
PF	: 0.95	0.95	0.95	0.95

FGFL-37

FGFL-39

FGFL-41



FGFL-107

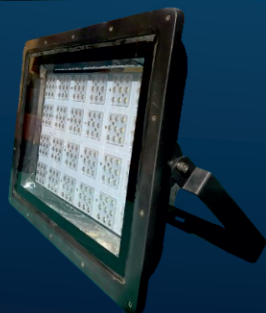
WATTAGE	: 600W	700W	750W	900W	1050W
LxBxH	: 350x480x140 mm	350x480x140 mm	350x480x140 mm	390x510x160 mm	390x510x160 mm
CCT	: 6000K	6000K	6000K	6000K	6000K
Lumen/W	: 100lm/w	100lm/w	100lm/w	100lm/w	100lm/w
Input Voltage	: 90-300V	90-300V	90-300V	90-300V	90-300V
PF	: 0.95	0.95	0.95	0.95	0.95

FGFL-107

FGFL-108

FGFL-84

FGFL-84



CRI >80



>50,000 Hrs.



LED RGB FLOOD LIGHT



FGFL-111

FGFL-76

FGFL-110

WATTAGE	: 50W	100W	120W
LxBxH	: 220x230x50 mm	220x230x50 mm	220x230x50 mm
CCT	: 6000K	6000K	6000K
Lumen/W	: 100lm/w	100lm/w	100lm/w
Input Voltage	: 90-300V	90-300V	90-300V
PF	: 0.95	0.95	0.95



CANOPY FLOOD LIGHT

FGFL-79

FGFL-75

WATTAGE	: 80W	100W
LxBxH	: 375x375x100 mm	375x375x100 mm
CCT	: 6000K	6000K
Lumen/W	: 100lm/w	100lm/w
Input Voltage	: 90-300V	90-300V
PF	: 0.95	0.95



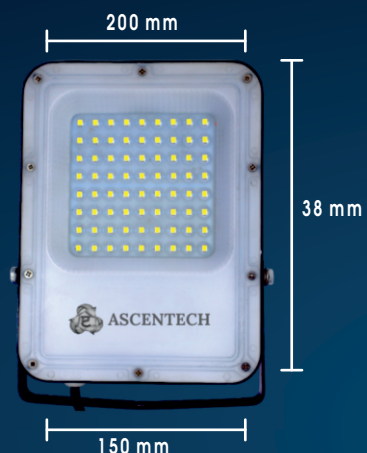
CRI >80



>50,000 Hrs.



LM MODEL FLOOD LIGHT



FGFL-57

WATTAGE	: 15W
LxBxH	: 200x150x38 mm
CCT	: 6000K
Lumen/W	: 100lm/w
Input Voltage	: 90-300V
PF	: 0.95

FGFL-57

WATTAGE	: 18W
LxBxH	: 200x150x38 mm
CCT	: 6000K
Lumen/W	: 100lm/w
Input Voltage	: 90-300V
PF	: 0.95

FGFL-59

WATTAGE	: 24W
LxBxH	: 200x150x38 mm
CCT	: 6000K
Lumen/W	: 100lm/w
Input Voltage	: 90-300V
PF	: 0.95

FGFL-59

WATTAGE	: 25W
LxBxH	: 200x150x38 mm
CCT	: 6000K
Lumen/W	: 100lm/w
Input Voltage	: 90-300V
PF	: 0.95

FGFL-66

WATTAGE	: 32W
LxBxH	: 200x150x38 mm
CCT	: 6000K
Lumen/W	: 100lm/w
Input Voltage	: 90-300V
PF	: 0.95

FGFL-66

WATTAGE	: 36W
LxBxH	: 200x150x38 mm
CCT	: 6000K
Lumen/W	: 100lm/w
Input Voltage	: 90-300V
PF	: 0.95

FGFL-60

WATTAGE	: 45W
LxBxH	: 200x150x38 mm
CCT	: 6000K
Lumen/W	: 100lm/w
Input Voltage	: 90-300V
PF	: 0.95

FGFL-60

WATTAGE	: 50W
LxBxH	: 200x150x38 mm
CCT	: 6000K
Lumen/W	: 100lm/w
Input Voltage	: 90-300V
PF	: 0.95

FGFL-61

WATTAGE	: 60W
LxBxH	: 200x150x38 mm
CCT	: 6000K
Lumen/W	: 100lm/w
Input Voltage	: 90-300V
PF	: 0.95



FGFL-103

WATTAGE	: 70W
LxBxH	: 220x230x45 mm
CCT	: 6000K
Lumen/W	: 100lm/w
Input Voltage	: 90-300V
PF	: 0.95

FGFL-65

WATTAGE	: 90W
LxBxH	: 220x230x45 mm
CCT	: 6000K
Lumen/W	: 100lm/w
Input Voltage	: 90-300V
PF	: 0.95

FGFL-65

WATTAGE	: 100W
LxBxH	: 220x230x45 mm
CCT	: 6000K
Lumen/W	: 100lm/w
Input Voltage	: 90-300V
PF	: 0.95

FGFL-72

WATTAGE	: 110W
LxBxH	: 220x230x45 mm
CCT	: 6000K
Lumen/W	: 100lm/w
Input Voltage	: 90-300V
PF	: 0.95

FGFL-72

WATTAGE	: 120W
LxBxH	: 220x230x45 mm
CCT	: 6000K
Lumen/W	: 100lm/w
Input Voltage	: 90-300V
PF	: 0.95

FGFL-67

WATTAGE	: 150W
LxBxH	: 220x230x45 mm
CCT	: 6000K
Lumen/W	: 100lm/w
Input Voltage	: 90-300V
PF	: 0.95



CRI >80



>50,000 Hrs.



LED LM STREET LIGHT

FGSL-66

WATTAGE	: 25W
LxBxH	: 210x120x60 mm
CCT	: 6000K
Lumen/W	: 100lm/w
Input Voltage	: 90-300V
DIA ID	: Flexible

FGSL-66

WATTAGE	: 30W
LxBxH	: 210x120x60 mm
CCT	: 6000K
Lumen/W	: 100lm/w
Input Voltage	: 90-300V
DIA ID	: Flexible

FGSL-67

WATTAGE	: 40W
LxBxH	: 210x120x60 mm
CCT	: 6000K
Lumen/W	: 100lm/w
Input Voltage	: 90-300V
DIA ID	: Flexible

FGSL-63

WATTAGE	: 45W
LxBxH	: 210x120x60 mm
CCT	: 6000K
Lumen/W	: 100lm/w
Input Voltage	: 90-300V
DIA ID	: Flexible

FGSL-61

WATTAGE	: 50W
LxBxH	: 210x120x60 mm
CCT	: 6000K
Lumen/W	: 100lm/w
Input Voltage	: 90-300V
DIA ID	: Flexible



FGSL-96

WATTAGE	: 70W
LxBxH	: 210x120x60 mm
CCT	: 6000K
Lumen/W	: 100lm/w
Input Voltage	: 90-300V
DIA ID	: 68

FGSL-96

WATTAGE	: 90W
LxBxH	: 210x120x60 mm
CCT	: 6000K
Lumen/W	: 100lm/w
Input Voltage	: 90-300V
DIA ID	: 68

FGSL-96

WATTAGE	: 100W
LxBxH	: 210x120x60 mm
CCT	: 6000K
Lumen/W	: 100lm/w
Input Voltage	: 90-300V
DIA ID	: 68



CRI >80



>50,000 Hrs.



LED GM STREET LIGHT



FGSL-53

WATTAGE	: 15W	18W	24W	25W	36W	40W	45W	48W	50W	60W
LxBxH	: 305x95x50 mm	305x95x50 mm	305x95x50 mm	305x95x50 mm	305x95x50 mm	305x95x50 mm	305x95x50 mm	305x95x50 mm	305x95x50 mm	305x95x50 mm
CCT	: 6000K	6000K	6000K	6000K	6000K	6000K	6000K	6000K	6000K	6000K
Lumen/W	: 100lm/w	100lm/w	100lm/w	100lm/w	100lm/w	100lm/w	100lm/w	100lm/w	100lm/w	100lm/w
Input Voltage	: 90-300V	90-300V	90-300V	90-300V	90-300V	90-300V	90-300V	90-300V	90-300V	90-300V
DIA ID	: 39	39	39	39	39	39	39	39	39	39

FGSL-53

FGSL-53

FGSL-22

FGSL-33

FGSL-33

FGSL-34

FGSL-34

FGSL-34

FGSL-87



FGSL-48

WATTAGE	: 70W
LxBxH	: 305x95x60 mm
CCT	: 6000K
Lumen/W	: 100lm/w
Input Voltage	: 90-300V
DIA ID	: 47



FGSL-42

FGSL-42

FGSL-41

FGSL-41

WATTAGE	: 90W	100W	110W	120W
LxBxH	: 320x145x60 mm	320x145x60 mm	320x145x60 mm	320x145x60 mm
CCT	: 6000K	6000K	6000K	6000K
Lumen/W	: 100lm/w	100lm/w	100lm/w	100lm/w
Input Voltage	: 90-300V	90-300V	90-300V	90-300V
DIA ID	: 52	52	52	52



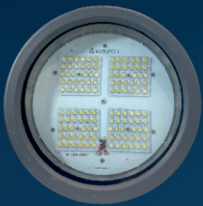
CRI >80



>50,000 Hrs.



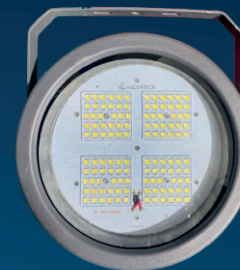
LED HIGHBAY LIGHT



FGHB-17

WATTAGE	: 50W	80W
CCT	: 6000K	6000K
Height	: 170 mm	170 mm
Fixture Dia	: 215 mm	215 mm

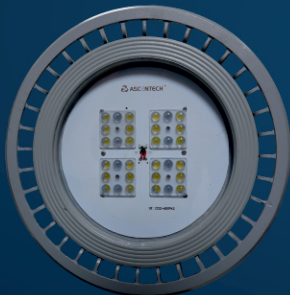
FGHB-17



FGHB-18

WATTAGE	: 100W	120W
CCT	: 6000K	6000K
Height	: 170 mm	170 mm
Fixture Dia	: 215 mm	215 mm

FGHB-18



FGHB-04

WATTAGE	: 130W	140W	150W	180W	200W
CCT	: 6000K	6000K	6000K	6000K	6000K
Height	: 170 mm	170 mm	170 mm	170 mm	170 mm
Fixture Dia	: 215 mm	215 mm	215 mm	215 mm	215 mm

FGHB-04

FGHB-04

FGHB-06

FGHB-06



FGHB-15

WATTAGE	: 240W	250W	300W	400W
CCT	: 6000K	6000K	6000K	6000K
Height	: 170 mm	230 mm	230 mm	230 mm
Fixture Dia	: 215 mm	255 mm	255 mm	255 mm

FGHB-15

FGHB-13

FGHB-16



CRI >80



>50,000 Hrs.



UNDERWATER LIGHT



FGUW-03

WATTAGE : 9W
Height : 46 mm
Upper Dia : 95 mm
Lumen/W : 100lm/w
Input Voltage : 90-300V



FGUW-01

WATTAGE : 18W
Height : 46 mm
Upper Dia : 125 mm
Lumen/W : 100lm/w
Input Voltage : 90-300V



FGUW-03

WATTAGE : 36W
Height : 80 mm
Upper Dia : 160 mm
Lumen/W : 100lm/w
Input Voltage : 90-300V



FGUW-07

WATTAGE : 36W
Height : 80 mm
Upper Dia : 160 mm
Lumen/W : 100lm/w
Input Voltage : 90-300V



CRI >80



>50,000 Hrs.



FLAMEPROOF FLOOD LIGHT



FGFP-01

WATTAGE	: 40W	45W	50W	60W	70W
CCT	: 6000K	6000K	6000K	6000K	6000K
Height	: 240 mm	240 mm	240 mm	240 mm	240 mm
Fixture Dia	: 300 mm	300 mm	300 mm	300 mm	300 mm

FGFP-02

FGFP-02

FGFP-03

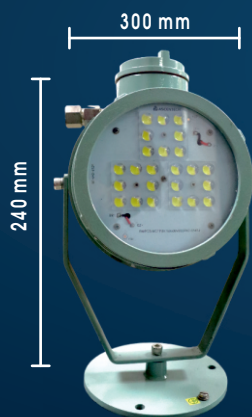
FGFP-04



FGFP-08

FGFP-09

WATTAGE	: 150W	200W
CCT	: 6000K	6000K
Height	: 290 mm	290 mm
Fixture Dia	: 600 mm	600 mm



FGFP-06

FGFP-06

FGFP-07

WATTAGE	: 80W	100W	120W
CCT	: 6000K	6000K	6000K
Height	: 240 mm	240 mm	240 mm
Fixture Dia	: 300 mm	300 mm	300 mm



CRI >80



>50,000 Hrs.



WELL GLASS LIGHT



FGWG-06

FGWG-06

FGWG-01

FGWG-02

FGWG-03

FGWG-15

FGWG-11

FGWG-04

FGWG-10

WATTAGE	: 25W	30W	35W	40W	42W	50W	60W	70W	75W
HEIGHT	: 110 mm	110 mm	110 mm	110 mm	110 mm	110 mm	110 mm	110 mm	150 mm
DIA	: 130 mm	130 mm	130 mm	130 mm	130 mm	130 mm	130 mm	130 mm	200 mm
CCT	: 6000K	6000K	6000K	6000K	6000K	6000K	6000K	6000K	6000K
Input Voltage	: 90-300V	90-300V	90-300V	90-300V	90-300V	90-300V	90-300V	90-300V	90-300V
DIFFUSER	: PC	PC	PC	PC	PC	PC	PC	PC	PC



CRI >80



>50,000 Hrs.

40

Applications : Coal Fields, Petroleum Plants, etc..



EXIT LIGHTS



FGEL-24

WATTAGE	:	10W	10W
LxBxH	:	300x130x30 mm	300x130x30 mm
COLOUR	:	GREEN	GREEN

FGEL-43



FGEL-25

WATTAGE	:	20W
LxBxH	:	300x130x30 mm
COLOUR	:	GREEN



FGEL-03

WATTAGE	:	40W
LxBxH	:	300x200x300 mm
COLOUR	:	Red + Warm White



CRI >80



>50,000 Hrs.



SPIKE LIGHTS



FGSP-04

WATTAGE	: 5W	5W	5W	5W
HEIGHT	: 250 mm	250 mm	250 mm	250 mm
UPPER DIA	: 60 mm	60 mm	60 mm	60 mm
LOWER DIA	: 5 mm	5 mm	5 mm	5 mm
COLOUR	: RED	BLUE	GREEN	WARM WHITE

FGSP-05

FGSP-06

FGSP-07



FGSP-03

FGSP-08

WATTAGE	: 10W	10W
HEIGHT	: 280 mm	280 mm
UPPER DIA	: 75 mm	75 mm
LOWER DIA	: 8 mm	8 mm
COLOUR	: WARM WHITE	COOL WHITE



FGSP-01

WATTAGE	: 15W
HEIGHT	: 280 mm
UPPER DIA	: 75 mm
LOWER DIA	: 8 mm
COLOUR	: WARM WHITE



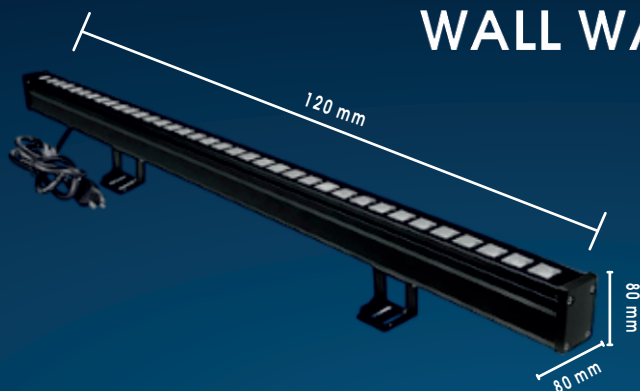
CRI >80



>30,000 Hrs.



WALL WASHER LIGHT



FGWW-01

FGWW-01

WATTAGE	: 36W	40W
LxBxH	: 120x80x80 mm	120x80x80 mm
PF	: 0.95	0.95
Lumen/W	: 100lm/w	100lm/w
Input Voltage	: 90-300V	90-300V

PAR LIGHTS



FGDJ-08

FGDJ-09

WATTAGE	: 100W	100W
HEIGHT	: 300 mm	300 mm
DIA	: 300 mm	300 mm
COLOUR	: Multi Colour	Multi Colour



FGDJ-08

FGDJ-09

WATTAGE	: 150W	150W
HEIGHT	: 300 mm	300 mm
DIA	: 300 mm	300 mm
COLOUR	: Multi Colour	Multi Colour



CRI >80



>30,000 Hrs.

BOLLARD LIGHT





FGBL-10

WATTAGE : 15W
HEIGHT : 610 mm
L X B : 110 x 110 mm
CCT : 3000K
MATERIAL : Aluminium



FGBL-06

WATTAGE : 15W
HEIGHT : 1000 - 1500 mm
DIA : 600 x 88 mm
CCT : 3000K - 6000K
MATERIAL : Aluminium

FGBL-04

18W
1000 - 1500 mm
600 x 88 mm
3000K - 6000K
Aluminium



FGBL-09

WATTAGE : 20W
HEIGHT : 1000 mm
DIA : 88 mm
COLOUR : 3000K - 6000K
MATERIAL : Aluminium



FGBL-01

WATTAGE : 10W
HEIGHT : 610 - 914 mm
DIA : 88 mm
CCT : 3000k - 6000K
MATERIAL : Aluminium

FGBL-02

15W
610 - 914 mm
88 mm
3000K - 6000K
Aluminium



FGBL-07

WATTAGE : 10W
HEIGHT : 610 mm
DIA : 110 mm
CCT : 3000K - 6000K
MATERIAL : Aluminium



FGBL-08

WATTAGE : 20W
HEIGHT : 610 - 914 - 1000 mm
DIA : 88 mm
CCT : 3000K - 6000K
MATERIAL : Aluminium



CRI >80



>35,000 Hrs.

POST TOP LIGHT





FGPT-01



WATTAGE	: 20W	20W
HEIGHT	: 370 mm	370 mm
UPPER DIA	: 900 mm	900 mm
LOWER DIA	: 100 mm	100 mm
POLE OD	: 75 mm	75 mm
CCT	: 6000K	6000K
DIFFUSER	: Clear	Milky

FGPT-05



FGPT-02

WATTAGE	: 40W	40W
HEIGHT	: 370 mm	370 mm
UPPER DIA	: 900 mm	900 mm
LOWER DIA	: 100 mm	100 mm
POLE OD	: 75 mm	75 mm
CCT	: 6000K	6000K
DIFFUSER	: Clear	Milky

FGPT-06

FGPT-03



WATTAGE	: 45W	45W
HEIGHT	: 370 mm	370 mm
UPPER DIA	: 1100 mm	1100 mm
LOWER DIA	: 150 mm	150 mm
POLE OD	: 70 mm	70 mm
CCT	: 6000K	6000K
DIFFUSER	: Clear	Milky

FGPT-07



FGPT-04

WATTAGE	: 60W	60W
HEIGHT	: 370 mm	370 mm
UPPER DIA	: 1100 mm	1100 mm
LOWER DIA	: 150 mm	150 mm
POLE OD	: 70 mm	70 mm
CCT	: 6000K	6000K
DIFFUSER	: Clear	Milky

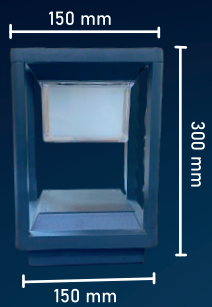
FGPT-08



CRI >80

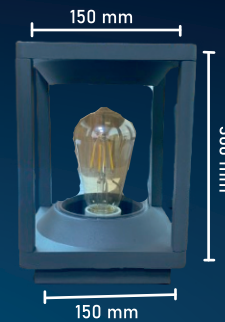


>25,000 Hrs.



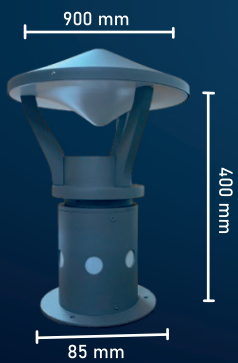
FGPT-11

WATTAGE : 15W
LxBxH : 150x150x300 mm
COLOUR : Cool White
BODY : Aluminium



FGPT-09

WATTAGE : 15W
LxBxH : 150x150x300 mm
COLOUR : Warm White
BODY : Aluminium



FGPT-10

WATTAGE : 25W
HEIGHT : 400 mm
UPPER DIA : 900 mm
LOWER DIA : 85 mm
POLE OD : 85 mm
COLOUR : Cool White



CRI >80



>25,000 Hrs.

EMERGENCY LIGHTS





PORTABLE EMERGENCY LIGHTING SYSTEM TOWER TYPE AC GENSET

FGEL-26

1 KVA

Rating Of Generator Set (In KVA)	: 1 KVA
Number Of Cylinder In The Engine	: 1
Minimum Continuous Working Hours	: 5Hour
Gen Set Fuel Tank Capacity (Minimum) - In Litres	: 3.5
Type Of Fuel	: Petrol
Minimum System Lumens	: 50000
Material Of Tower	: Galvanised Iron/Mild steel
Minimum Height Of Tower:	: 4M
Type Of Mounting	: With trolley

FGEL-41

2 KVA

Rating Of Generator Set (In KVA)	: 2 KVA
Number Of Cylinder In The Engine	: 1
Minimum Continuous Working Hours	: 12 Hour
Gen Set Fuel Tank Capacity (Minimum) - In Litres	: 9.5
Type Of Fuel	: Petrol
Minimum System Lumens	: 60000-80000
Material Of Tower	: Galvanised Iron/Mild steel
Minimum Height Of Tower:	: 4M
Type Of Mounting	: With trolley

FGEL-39

3 KVA

Rating Of Generator Set (In KVA)	: 3 KVA
Number Of Cylinder In The Engine	: 1
Minimum Continuous Working Hours	: 12 - 18 Hour
Gen Set Fuel Tank Capacity (Minimum) - In Litres	: 20
Type Of Fuel	: Petrol
Minimum System Lumens	: 60000 - 80000
Material Of Tower	: Galvanised Iron/Mild steel
Minimum Height Of Tower:	: 4M
Type Of Mounting	: With trolley





PORTABLE EMERGENCY LIGHTING SYSTEM TOWER TYPE AC GENSET

FGEL-27

5 KVA

Rating Of Generator Set (In KVA)	: 5 KVA
Number Of Cylinder In The Engine	: 1
Minimum Continuous Working Hours	: 12 - 30 Hour
Gen Set Fuel Tank Capacity (Minimum) - In Litres	: 15 - 25
Type Of Fuel	: Diesel
Minimum System Lumens	: 80000 - 150000
Material Of Tower	: Galvanised Iron/Mild steel
Minimum Height Of Tower:	: 7-9M
Type Of Mounting	: With trolley



FGEL-28

7.5 KVA

Rating Of Generator Set (In KVA)	: 7.5 KVA
Number Of Cylinder In The Engine	: 2
Minimum Continuous Working Hours	: 12 - 30 Hour
Gen Set Fuel Tank Capacity (Minimum) - In Litres	: 15 - 40
Type Of Fuel	: Diesel
Minimum System Lumens	: 80000-150000
Material Of Tower	: Galvanised Iron/Mild steel
Minimum Height Of Tower:	: 7-9M
Type Of Mounting	: With trolley



Applications : Construction Sites, Gardens, Coal Fields, etc..



REMOTE AREA LIGHTING SYSTEM

FGEL-07

SINGLE POLE

Minimum System Lumen	:	5000
Minimum Continuous Working Hours	:	15 Hours
Chemistry Of Battery	:	Li-ion
Battery Voltage	:	12V
Battery Capacity	:	60AH
Minimum Height Of Tower	:	> 2 Mtr.
Material Of Tower	:	Aluminum
Protection Of The Entire Housing	:	IP66
Operating Temperature Range	:	-20 deg. C to +50 deg. C



FGEL-34

DOUBLE POLE

Minimum System Lumen	:	5000*2
Minimum Continuous Working Hours	:	8 - 15 Hours
Chemistry Of Battery	:	Li-ion
Battery Voltage	:	12V
Battery Capacity	:	60AH - 90AH
Minimum Height Of Tower	:	>2 Mtr.
Material Of Tower	:	Aluminum
Protection Of The Entire Housing	:	IP66
Operating Temperature Range	:	-20 deg. C to +50 deg. C



FGEL-33

FOUR POLE

Minimum System Lumen	:	5000*4
Minimum Continuous Working Hours	:	8 Hours
Chemistry Of Battery	:	Li-ion
Battery Voltage	:	12V
Battery Capacity	:	93AH
Minimum Height Of Tower	:	>2 Mtr.
Material Of Tower	:	Aluminum
Protection Of The Entire Housing	:	IP66
Operating Temperature Range	:	-20 deg. C to +50 deg. C





FGEL-20

EMERGENCY LIGHT WITH TRIPOD STAND



Body Material	: ALUMINIUM
Power	: 80 - 400 W
HEIGHT	: 3 Mtr.
Lightening Color	: Cool White
Lighting Type	: High Intensity Discharge LED
IP Rating	: IP 66
Working Voltage	: 90 - 300VAC, 50 - 60Hz
Features	: Easy Installation on concrete roof Used for Searching
Beam Range	: 400+ Metres
PF	: >0.95
Rotate	: 360°
CCT	: 5500K-6000K
CRI	: >70
EFFICACY	: 100 lm/W
Optical Grade	: Reflector / Lens
Narrow Beam	: 10° - 20°
Reflector/Lens Efficiency	: >90%



FGEL-47

FLOOD LIGHT WITH TRIPOD STAND

Body Material	: ALUMINIUM
Power	: 80 - 400 W
HEIGHT	: 3 Mtr.
Lightening Color	: Cool White
Lighting Type	: High Intensity Discharge LED
IP Rating	: IP 66
Working Voltage	: 90 - 300VAC, 50 - 60Hz
Features	: Easy Installation on concrete roof Used for Searching
Beam Range	: 400+ Metres
PF	: >0.95
Rotate	: 360°
CCT	: 5500K-6000K
CRI	: >70
EFFICACY	: 100 lm/W
Optical Grade	: Reflector / Lens
Narrow Beam	: 10° - 20°
Reflector/Lens Efficiency	: >90%



FGEL-38

FIELD MOTORIZED REVOLVING SEARCH LIGHT

Body Material	: ALUMINIUM
Power	: 250W
Lightening Color	: Cool White
Lighting Type	: High Intensity Discharge LED
IP Rating	: IP 66
Working Voltage	: 90 - 300VAC, 50 - 60Hz
Features	: High Narrow Beam, Protection from High/Low Volts
Beam Range	: 400+ Meters
PF	: >0.95
Rotate	: 360°
Rotation Speed	: 01-10 RPM
CCT	: 5500K-6000K
Optical Grade	: Reflector/Lens
Narrow Beam	: 3°
Reflector/Lens Efficiency	: >90%



FGEL-17

VEHICLE MOUNTED REVOLVING SEARCH LIGHT

LED	: 50W (5w x 10)
Operating Voltage	: 12V DC (With DC/ Car Cigarette Lighter Socket)
Operating Options	: Through Wireless remote control with Left, Right, Up & Down functions
Colour/Material	: Black/Polycarbonate
Beam Distance	: Upto 500m Approx in clear weather
Lift time in Hours	: 50,000 hour (Approx)
Rotation	: Horizontal 360° & Vertical 90°
Base	: Heavy Magnet base for stability
Weight	: Around 4 Kgs (w/o battery)
Dimension	: 26 x 20.5 x 18 cms
Handle	: Provided on the Top





FGEL-19

HIGHBAY MOTORIZED REVOLVING LIGHT



Body Material	: ALUMINIUM
Power	: 80 – 400 W
Lightening Color	: Cool White
Lighting Type	: High Intensity Discharge LED
IP Rating	: IP 66
Working Voltage	: 90 – 300VAC, 50 – 60Hz
Features	: Easy Installation on concrete roof Used for Searching
Beam Range	: 400+ Metres
PF	: >0.95
Rotate	: 360°
Rotation Speed	: 02 RPM
CCT	: 5500K-6000K
Optical Grade	: Reflector / Lens
Narrow Beam	: 10° – 20°
Reflector/Lens Efficiency	: >90%

FGEL-18

HIGHBAY MANUAL REVOLVING LIGHT



Body Material	: ALUMINIUM
Power	: 80 – 400 W
Lightening Color	: Cool White
Lighting Type	: High Intensity Discharge LED
IP Rating	: IP 66
Working Voltage	: 90 – 300VAC, 50 – 60Hz
Features	: Easy Installation on concrete roof Used for Searching
Beam Range	: 400+ Metres
PF	: >0.95
Rotate	: 360°
Rotation Speed	: 02 RPM
CCT	: 5500K-6000K
Optical Grade	: Reflector / Lens
Narrow Beam	: 10° – 20°
Reflector/Lens Efficiency	: >90%



HIGHBAY LIGHT WITH TRIPOD STAND



FGEL-21

Body Material	:	ALUMINIUM
Power	:	250W
Lightening Color	:	Cool White
Lighting Type	:	High Intensity Discharge LED
IP Rating	:	IP 66
Working Voltage	:	90-300VAC, 50-60Hz
Features	:	High Narrow Beam, Protection from High/Low Volts
Beam Range	:	400+ Meters
PF	:	>0.95
Rotate	:	360°
Minimum height of Tower	:	3M
CCT	:	5500K-6000K
Optical Grade	:	Reect or/Lens
Narrow Beam	:	10° - 20°
Reflector/Lens Efficiency	:	>90%



HELIPAD LIGHT

FGHP-02



Light Source	:	Ultra High Intensity LED
No. of LEDs	:	4 LEDs (2 White LEDs & 2 RGB LEDs)
Input Charging Voltage	:	220 V AC, 50 Hz
CRI (Ra)	:	> 70 (For white LEDs)
Height	:	12 Inch
Length	:	8 Inch
Width	:	8 Inch
Weight	:	4.5 Kg
Body Color	:	Yellow
Body Material	:	Mild Steel
Operation Mode	:	30 Hours
Operating Voltage	:	5V DC
Horizontal Output	:	360 degree
No. of Modes of Light	:	Four Modes (White Light, Blue Light, Green Light, Red Light)
Flash Characteristics	:	Instant Burning
Wind Speed (m/s)	:	225
Humidity	:	10-90 %
LED Life Hours (Minimum)	:	50000 Hours
IP Rating	:	Ip67
Ambient Temperature	:	-20 to 55 degree C
Circuit Protection	:	Integrated

TORCH & BATON





HAND HELD SEARCH LIGHT



FGHH-36

Type of lamp	:	LED
Battery capacity (AH)	:	8 AH
Wattage of lamp (Watt)	:	55 W
Type of battery	:	Lithium-ion/SMF
Type of housing material	:	ABS
Warranty for HHSL (in years)	:	12 Months
Lamp life (Hours)	:	50000
Run time(Hours)	:	6 Hours
Battery Voltage (Volts)	:	3.7V
Dia of search light (mm)	:	176 mm
Lamp dimming	:	Step type
Effective distance of search light	:	>800 meters



FGHH-05

Type of lamp	:	LED
Battery capacity (AH)	:	8 AH
Wattage of lamp (Watt)	:	30 W
Type of battery	:	Lithium-ion/SMF
Type of housing material	:	ABS
Warranty for HHSL (in years)	:	12 Months
Lamp life (Hours)	:	50000
Run time(Hours)	:	6 Hours
Battery Voltage (Volts)	:	3.7V
Dia of search light (mm)	:	115 mm
Lamp dimming	:	Step type
Effective distance of search light	:	>600 meters



FGHH-21

Type of lamp	:	LED
Battery capacity (AH)	:	4-5 AH
Wattage of lamp (Watt)	:	25 W
Type of battery	:	Lithium-ion/SMF
Type of housing material	:	ABS
Warranty for HHSL (in years)	:	12 Months
Lamp life (Hours)	:	50000
Run time(Hours)	:	6 Hours
Battery Voltage (Volts)	:	3.7V
Dia of search light (mm)	:	125-150 mm
Lamp dimming	:	Step type



FGHH-35

Type of lamp	:	LED
Battery capacity (AH)	:	9 AH
Wattage of lamp (Watt)	:	50 W
Type of battery	:	Lithium-ion/SMF
Type of housing material	:	ABS
Warranty for HHSL (in years)	:	12 Months
Lamp life (Hours)	:	50000
Run time(Hours)	:	6 Hours
Battery Voltage (Volts)	:	3.7V
Dia of search light (mm)	:	125-150 mm
Lamp dimming	:	Step type

HAND HELD SEARCH LIGHT



FGHH-14



Type of lamp	:	LED
Battery capacity (AH)	:	8 AH
Wattage of lamp (Watt)	:	20 W
Type of battery	:	Lithium-ion/SMF
Type of housing material	:	ABS
Warranty for HHSL (in years)	:	12 Months
Lamp life (Hours)	:	50000
Run time(Hours)	:	2 Hours
Battery Voltage (Volts)	:	3.7V
Dia of search light (mm)	:	100-125 mm
Lamp dimming	:	Step type
Effective distance of search light	:	500 meters

FGHH-05



Type of lamp	:	LED
Battery capacity (AH)	:	4-5 AH
Wattage of lamp (Watt)	:	10 W
Type of battery	:	Lithium-ion/SMF
Type of housing material	:	ABS
Warranty for HHSL (in years)	:	12 Months
Lamp life (Hours)	:	50000
Run time(Hours)	:	5 Hours
Battery Voltage (Volts)	:	4.2 V
Dia of search light (mm)	:	105 mm
Lamp dimming	:	Step type
Effective distance of search light	:	400 meters

FGHH-46



Type of lamp	:	LED
Battery capacity (AH)	:	5 AH
Wattage of lamp (Watt)	:	15 W
Type of battery	:	Lithium-ion/SMF
Type of housing material	:	ABS
Warranty for HHSL (in years)	:	12 Months
Lamp life (Hours)	:	50000
Run time(Hours)	:	5.5 Hours
Battery Voltage (Volts)	:	3.7 V
Dia of search light (mm)	:	76-100 mm
Lamp dimming	:	Step type

FGHH-20



Type of lamp	:	LED
Battery capacity (AH)	:	8 AH
Wattage of lamp (Watt)	:	25 W
Type of battery	:	Lithium-ion/SMF
Type of housing material	:	ABS
Warranty for HHSL (in years)	:	12 Months
Lamp life (Hours)	:	50000
Run time(Hours)	:	6 Hours
Battery Voltage (Volts)	:	3.7 - 4.2 V
Dia of search light (mm)	:	101-125 mm
Lamp dimming	:	Step type



HAND HELD SEARCH LIGHT

FGHH-54

Type of lamp	: LED
Dia of search light (mm)	: 50 to 75
Wattage of lamp (Watt)	: 30
Color temperature (Degree K)	: 4000 to 4500 deg. K for other lamps
Type of battery	: Lithium ion
Type of housing material	: Aluminium
Warranty for HHSL (in years)	: 12 Months (Li-ion battery)
Continuous search light operation time at maximum lumen output (Hours)	: FOR LED/XENON \geq 3 HRS
Beam angle selection	: Wide
Lamp dimming	: Continuous
Effective distance of search light	: \geq 100 metres
Type of front glass	: Toughened, scratch resistant
Operation mode	: High Beam/ Low Beam
Gross weight of Search light with battery (Kg) and Ingress protection	: 1.8 kg (max.,) with Li-ion battery
Accessories required	: Recharging Adapter For Both Dc And Ac/ Shoulder Strap



FGHH-29

Type of lamp	: LED
Dia of search light (mm)	: 50 to 75
Wattage of lamp (Watt)	: 20
Color temperature (Degree K)	: 5500 to 6500 deg. K for other lamps
IP Rating	: IP-66
Beam angle selection	: Narrow and Wide (both feature)
Built-in battery charger	: No but external
Type of battery	: Lithium ion
Type of housing material	: Aluminium
Gross weight	: 1.8 kg (max.,) with Li-ion battery
Warranty for HHSL (in years)	: 12 Months (Li-ion battery)
Lamp dimming	: Step type
lumen output (Hours)	: FOR LED/XENON \geq 2 HRS
Operating Temperature range	: -20 deg C to +55 deg C
Operating Range	: \geq 500 meter
charging time	: 4Hrs
Lamp life	: 50000hrs



HAND HELD SEARCH LIGHT



FGHH-13

Type of lamp	: LED
Dia of search light (mm)	: 126 to 150
Wattage of lamp (Watt)	: 10
Color temperature (Degree K)	: 5500 to 6500 deg. K for other lamps
IP Rating	: IP-66
Beam angle selection	: Narrow
Built-in battery charger	: Yes
Type of battery	: Lithium ion
Type of housing material	: Aluminium
Gross weight	: 1.8 kg (max.,) with Li-ion battery
Warranty for HHSL (in years)	: 12 Months (Li-ion battery)
Lamp dimming	: Step type
lumen output (Hours)	: FOR LED/XENON >= 5 HRS
Operating Temperature range	: -10 deg C to +55 deg C
Operating Range	: >500 meter
charging time	: 4Hrs
Lamp life	: 50000hrs



FGHH-45

Type of lamp	: LED
Dia of search light (mm)	: 130 to 160
Wattage of lamp (Watt)	: 55
Color temperature (Degree K)	: 5500 to 6500 deg. K for other lamps
IP Rating	: IP-66
Beam angle selection	: Narrow and Wide (both feature)
Built-in battery charger	: No but external
Type of battery	: Lithium ion
Type of housing material	: Aluminium
Gross weight	: 4 Kg with Li-ion battery
Warranty for HHSL (in years)	: 12 Months (Li-ion battery)
Lamp dimming	: Step type
lumen output (Hours)	: FOR LED/XENON >= 2 HRS
Operating Temperature range	: -20 deg C to +55 deg C
Operating Range	: >500 meter
charging time	: 4Hrs
Lamp life	: 50000hrs





HAND HELD SEARCH LIGHT

FGHH-61

Type of lamp	: LED
Dia of search light (mm)	: 50 to 75
Wattage of lamp (Watt)	: 10
Color temperature (Degree K)	: 5500 to 6500 deg. K for other lamps
Type of battery	: Lithium ion
Type of housing material	: Aluminium
Warranty for HHSL (in years)	: 12 Months (Li-ion battery)
lumen output (Hours)	: FOR LED/XENON >= 5 HRS
Beam angle selection	: Narrow
Built-in battery charger	: NO but external
Battery Voltage (Volts)	: 3.7
Light output of search light	: 1000
Effective distance of search light	: >= 400 metres



FGHD-14

Material	: Aluminium Alloy + ABS
LED Light Source	: T6/XPE LED
Net Weight	: 200g
Mode	: High - LOW - Strobe
Battery	: 1800 mAh / Built in Lithium Battery
Charging Method	: Type - C USB
Sensor Distance	: 10 cm
Runtime	: 4 - 6 Hours
Function	: Power Display / Power Bank
Switch	: Press Switch + Long Power Bank
Zoomable Lense	: Telescopic Zoomable Lense



SHOCK BATON & TRAFFIC BATON



FGHH-74

Weight	: 01 Kg (Maximum)
Carriage	: Hand Held
Body Material	: ABS
Operating Temperature	: -20 to 50 degree C
Indicators	: Full, Low & Charging Battery
Input Voltage	: 220 Volt, 50Hz
Output Voltage	: Minimum 10 KV
Activation of Shock	: By Self-Return Trigger Switch



FGHH-63

Weight	: 01 Kg (Maximum)
Carriage	: Hand Held
Body Material	: ABS
Operating Voltage	: 3.7 V DC
Indicators	: Full, Low & Charging Battery
Input Voltage	: 220 Volt, 50Hz
Colour	: Red, Green, White
Extra Features	: Light on Top and Buzzer



FGHH-44

Type of lamp	: LED
Dia of search light (mm)	: 50 to 75
Wattage of lamp (Watt)	: 10
Color temperature (Degree K)	: 5500 to 6500 deg. K for other lamps
Type of battery	: Lithium ion
Type of housing material	: Aluminium
Warranty for HHSL (in years)	: 12 Months (Li-ion battery)
lumen output (Hours)	: FOR LED/XENON >= 5 HRS
Beam angle selection	: Narrow
Built-in battery charger	: NO but external
Battery Voltage (Volts)	: 3.7
Light output of search light	: 1000
Effective distance of search light	: >= 400 metres



FGHH-39

Type of lamp	: LED
Dia of search light (mm)	: 130 to 160
Wattage of lamp (Watt)	: 40
Color temperature (Degree K)	: 5500 to 6500 deg. K for other lamps
IP Rating	: IP-66
Beam angle selection	: Narrow and Wide (both feature)
Built-in battery charger	: No but external
Type of battery	: Lithium ion
Type of housing material	: Aluminium
Gross weight	: 2.5 Kg with Li-ion battery
Warranty for HHSL (in years)	: 12 Months (Li-ion battery)
Lamp dimming	: Step type
lumen output (Hours)	: FOR LED/XENON >= 2 HRS
Operating Temperature range	: -20 deg C to +55 deg C
Operating Range	: >500 meter
charging time	: 4Hrs
Lamp life	: 50000hrs



ASCENTECH®

CONTACT US:-

Ascentech Lightning Solution
Email - ascentechled@gmail.com
Phone No. + 91 81303 88587
Website :- www.ascentech.in

GET IN TOUCH



Scan for Website



@Ascentech



@ascentechofficial



@Ascentech